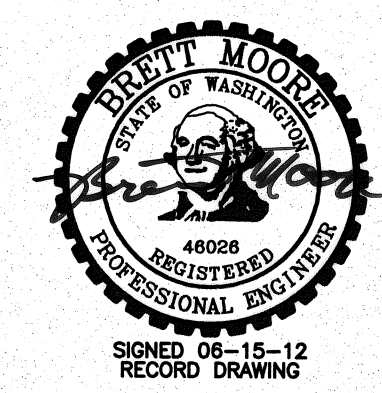
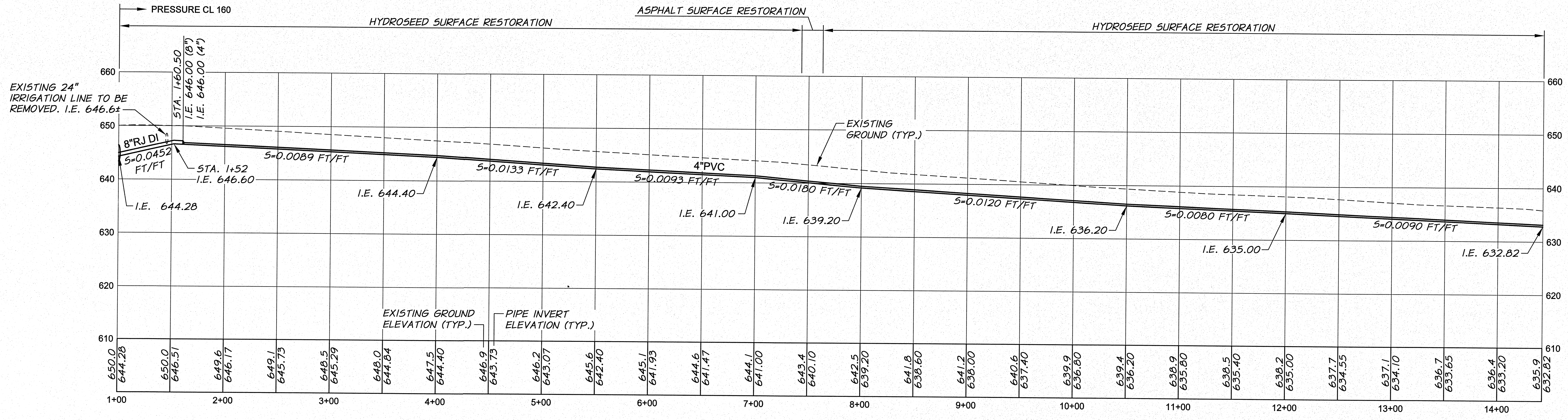
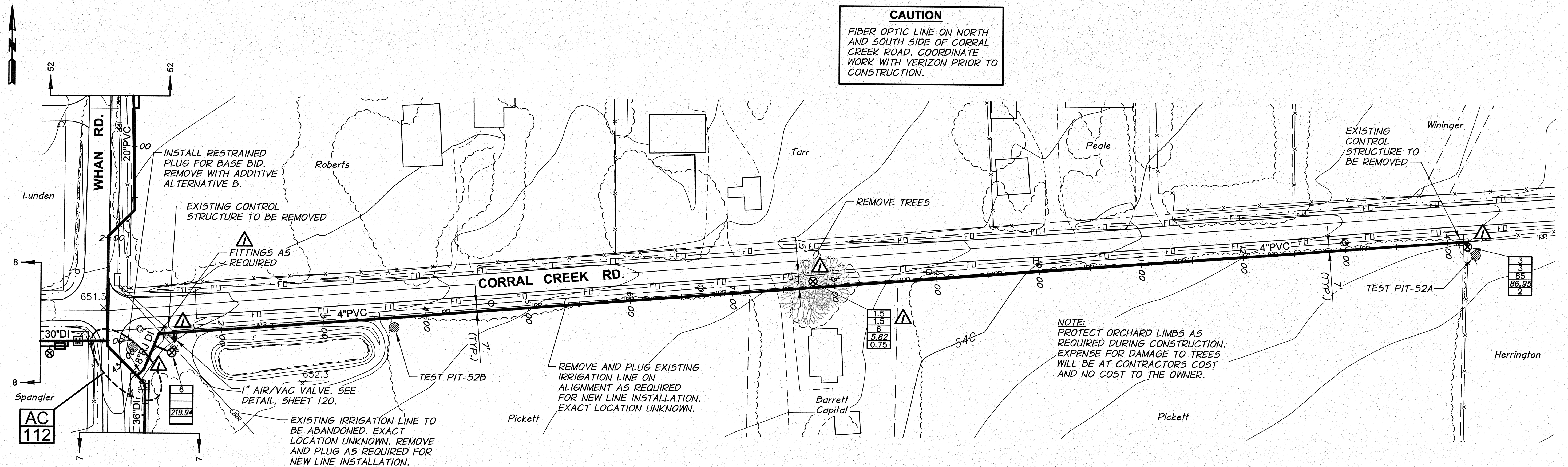
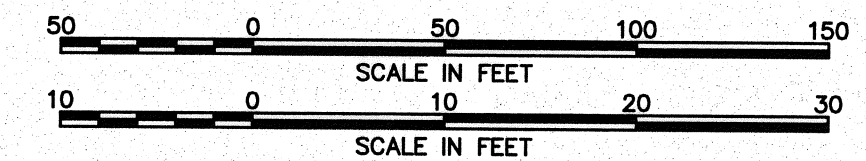


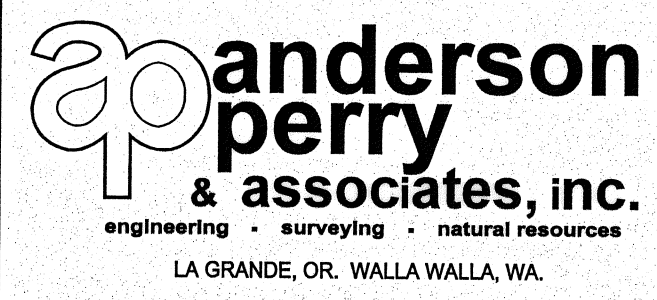
CAUTION
 FIBER OPTIC LINE ON NORTH AND SOUTH SIDE OF CORRAL CREEK ROAD. COORDINATE WORK WITH VERIZON PRIOR TO CONSTRUCTION.



RECORD DRAWING		BY	E.H.	DATE	12/11
DESIGNED BY	R. HARRIS	XREFS:	TB-BID.dwg		
DRAWN BY	R. RASMUSSEN	ACAD FILE:	CORRALCRKEAST-PNP.dwg		
REVIEWED BY	H. PERRY	COPYRIGHT 2009 BY ANDERSON-PERRY & ASSOC., INC.			



RECORD DRAWINGS
 These record drawings have been prepared, in part, on the basis of information compiled and furnished by others. They may contain some discrepancies and omissions, and do not necessarily represent "exact" field conditions. The Owner and the Engineer accept no responsibility for their accuracy.



BENTON IRRIGATION DISTRICT
 IRRIGATION SYSTEM IMPROVEMENTS
 PHASE I
 CORRAL CREEK (EAST) ROAD PIPING
 PLAN AND PROFILE - STA. 1+00 TO 14+42

ADDITIVE ALTERNATIVE B
 SHEET
51