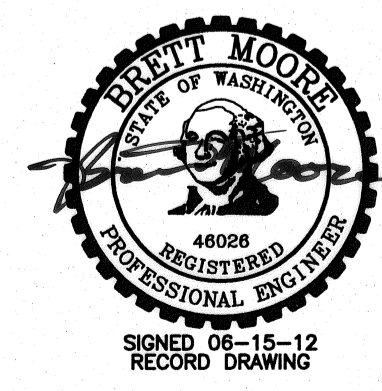
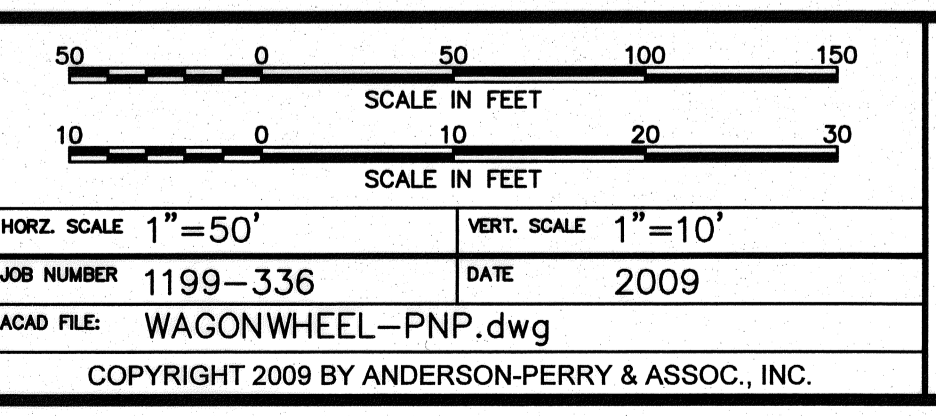


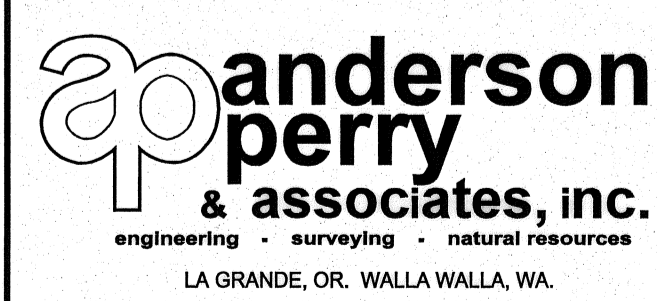
ADDITIVE ALTERNATIVE A - STA. 1+00 TO 6+50, STA. 7+20 TO 8+50, STA. 9+00 TO 13+40, STA. 13+90 TO 15+00
 ADDITIVE ALTERNATIVE B - STA. 6+50 TO 7+20, STA. 8+50 TO 9+00, STA. 13+40 TO 13+90



REVISION	BY	DATE	REVISION	BY	DATE
RECORD DRAWING	E.H.	12/11			
DESIGNED BY	R. HARRIS		XREFS:	TB-BID.dwg	
DRAWN BY	R. RASMUSSEN		JOB NUMBER	1199-336	
REVIEWED BY	H. PERRY		DATE	2009	
			ACAD FILE	WAGONWHEEL-PNP.dwg	
			COPYRIGHT	2009 BY ANDERSON-PERRY & ASSOC., INC.	



RECORD DRAWINGS
 These record drawings have been prepared, in part, on the basis of information compiled and furnished by others. They may contain some discrepancies and omissions, and do not necessarily represent "exact" field conditions. The Owner and the Engineer accept no responsibility for their accuracy.



BENTON IRRIGATION DISTRICT
 IRRIGATION SYSTEM IMPROVEMENTS
 PHASE I
 WAGONWHEEL TO MONTANA ROAD PIPING
 PLAN AND PROFILE - STA. 1+00 TO 15+00

SHEET
106